
MODEL 621

AIRPORT ANNOUNCEMENT CONTROL SYSTEM SOFTWARE

GENERAL DESCRIPTION

The setup procedures covered in this manual are for the use of Consultant/Contractor/Installer. They are not for use by untrained personnel. Their purpose is to enter the operating parameters and attributes, and to initialize the system.

The 20 kHz test described in this document is an option, and is not supplied with every system.

OPERATION

Before attempting the setup procedure, it is recommended that the system operating instructions be read.

In an initial setup the following procedures **must** be completed:

1. Entry of port number and address of each 596
2. Assignment of each circuit name
3. Assignment of input attributes (monitor, external, audible test frequency, 20 kHz test, and/or zone bus test)
4. Audible and 20 kHz test level
5. Audible and 20 kHz deviation
6. Assignment of microphone station test input
7. Enable printer, if included
8. Assignment of test zones for both audible frequency and microphone station tests
9. System set
10. Selection of listening levels

In subsequent setups any temporary or permanent changes desired may be made, but please note that System Set must be run after changes such as the following:

1. Adding or subtracting one or more microphone stations
2. Changing 540 maximum attenuation or fixed attenuation in any tested circuit
3. Any permanent audio level changes in any tested circuit

In the case of items 2. and 3., Circuit Set may be substituted for System Set.

Keep in mind that the setup software is a tool for the Consultant/Contractor/Installer. The more familiar you are with its features and operation, the more useful it will be.

A data entry is generally accomplished by typing a number of characters, then pressing the ENTER key. The keyboard of the IED Model 590 Microcomputer System is similar to many personal computer keyboards. It includes some symbols and characters which are not used in this system. Only those characters and symbols which are used by this



software have been made valid. They include the letters A-Z, the numbers 0-9, and the five symbols below.

>>

- + / : &

Any other symbols and punctuation marks will not be accepted and will cause the computer to beep.

The tabletop computers use 590I-2 cards, each having 2 RS422 ports. The rack mounted computers use 590I-4 cards, having 4 RS422 ports each. Port numbers are set by jumper arrays on the cards, and are normally shipped set at 0 and 1 for the 590I-2, and 0-3 for the 590I-4 cards. Possible numbers are 0-15. The installer must examine the jumpers and ascertain the port numbers. If more than one 590I card is used, each port must have a different number. It is not required that they be numbered sequentially, or that the numbers start with 0.

Each 596 card has an 8 position DIP switch for setting its address. Addresses may be set from 0-255. They are normally shipped from the factory set at 0. All cards connected to any given port must have unique addresses, although 596s on different ports may have the same address. The installer must examine the DIP switches and be sure that they are set properly.

MENU TREE

The Menu Tree is a diagram which includes all menus, and shows their interconnection. By examining the Menu Tree one may determine the path which must be followed to arrive at the desired function. The Functions section below includes a detailed description of each function, and how it operates.

SCREENS

The screen images near the end of this manual include samples of all of the screens which will be encountered.

PRINTOUTS

When a printer is connected to the system and the print function is enabled, the setup attributes and set levels will be printed automatically each time a system set is run. The assigned attributes for the 596 being displayed will be printed when requested, whether or not the print function is enabled. See **PRINT 596** in the Functions section for details. A sample printout has been included in this document after the sample screens.

*Innovative Electronic Designs, Inc. • 9701 Taylorsville Road • Louisville, Kentucky 40299 • USA
Phone: (502) 267-7436 • Fax: (502) 267-9070 • Internet: <http://www.iedaudio.com>*

ACCESS

The Setup menus are accessed from the Password Level menu. Press the **PASSWORD** function key, then respond to the ENTER PASSWORD prompt with the setup password for the job, which is supplied separately.

FUNCTIONS

PASSWORD

Description: A password is used for security reasons. It prevents unauthorized persons from making changes in the system configuration. The **PASSWORD** function is used to enter the other function menus which allow system modifications, modification of the operating parameters, scheduling, and testing. Each authorized system operator has his own password.

Key sequence: When the function key is pressed, the prompt requests:

ENTER PASSWORD

Type in the password, then press ENTER. Take care to type correctly. For security reasons, the characters will not appear on the screen. Once the password has been entered properly, the next menu appears, and the name of the person logged in appears in the space provided at the lower right of the screen.

Error messages: Computer beeps if invalid characters are entered. An invalid password produces the message "Access Denied!"

TEST SETUP

Description: The **TEST SETUP** function is used to access the System Set menu and screen.

Key sequence: When the function key is pressed, the System Set menu and screen appear. No further action is necessary.

Error messages: None.

596 SETUP

Description: The **596 SETUP** function is used to access the 596 Setup menu and screen.

Key sequence: When the function key is pressed, the 596 Setup menu and screen appear. No further action is necessary.

Error messages: None.



INPUT NAMES

Description: The **INPUT NAMES** function is used to enter, clear, or change the name given to a test point. All test points are identified by the system in terms of their 596 input terminal (A1 - 16 through D1 - 16). Names are added for the convenience of the operator so that the test points may be associated with a system circuit or area (e.g., ACS ZN 12, GATE B12, or CURBSIDE).

Key sequence: When the function key is pressed, the cursor (black background) appears at the name window for the first circuit (A1) of the first 596, and the following prompt appears in the prompt area:

Pg Up, Pg Dn, ↑, ↓, →, ←, keys move cursor. Ins key to Enter NAME.

32 inputs are displayed at a time. The Pg Dn key moves the display ahead to the next 32 inputs. The Pg Up moves the display back 32 inputs. When the cursor is at the desired input, press the Ins key. The following prompt will appear:

```
[C<enter>, to clear name] [<enter> key to continue] . . .  
Enter New Identifier Name for Port A1 [10 character limit] : _____
```

To clear the input, type "C", then press ENTER. To enter a name type the desired name consisting of up to 10 valid characters, then press the ENTER key. After ENTER is pressed, the cursor steps to the next input.

Continue until all desired entries or changes have been made, then exit the function by pressing ENTER without first pressing 'Ins'.

Error messages: None. The computer will beep and reject invalid characters.

PORT NUM (PORT NUMBER)

Description: The **PORT NUM** function is used to change the port number of the 596 which is currently being displayed. There are 16 possible port numbers, 0 - 15.

Key sequence: When the function key is pressed, the prompt requests:

```
Enter 1st 596's port number 0 - 15 (0=2C1), : ____
```

If a 596 other than the first one is being displayed when the function is invoked, then its number will be displayed in place of '1st' in the above prompt.

Type the desired port number, then press ENTER. The new port number will be displayed immediately at the top of the screen.

Error messages: If an invalid port number is entered, the message "Entry selected is not available!" will appear in the prompt area, and the entry will be rejected.

*Innovative Electronic Designs, Inc. • 9701 Taylorsville Road • Louisville, Kentucky 40299 • USA
Phone: (502) 267-7436 • Fax: (502) 267-9070 • Internet: <http://www.iedaudio.com>*

596 ADDR5 (596 ADDRESS)

Description: The **596 ADDR5** function is used to change the address of the 596 which is currently being displayed. There are 256 possible addresses, 0 - 255.

Key sequence: When the function key is pressed, the prompt requests:

Enter 1st 596's port number 0 - 15 (0=2C1), : __

If a 596 other than the first one is being displayed when the function is invoked, then its number will be displayed in place of '1st' in the above prompt.

Type the desired address, then press ENTER. The new address will be displayed immediately at the top of the screen.

Error messages: If an invalid address is entered, the message "Entry selected is not available!" will appear in the prompt area, and the entry will be rejected.

PRINT 596 (PRINT 596 SET AND TEST DATA)

Description: The **PRINT 596** function is used to display the setup information and test data for the 596 test points from the last system test. Refer to the Table below for a description of the data presented.

COLUMN HEAD	EXPLANATION
IN	596 Input, A1 - 16, B1 - 16, C1 - 16, D1 - 16
NAME	Circuit name as entered by the user for ease in identification
ATTRIBUTE	Test attributes: M = Monitor; 150, 500, 800, 4K, 8K = Audible test frequencies; 20K = 20 kHz once a minute test, Z = Zone bus test; EXT = External input (only for testing DC)
SET LEVEL	The level reading at the input to the 590A from the circuit tested through the 596
DEVIATION	The maximum allowable deviation for the audible frequency test from the value obtained in the last system set before a fault is declared
20K SET	The level reading at the input to the 590A, using the oscillator 20 kHz test tone, from the circuit tested through the 596
20K DEV	The deviation from the set level reading from the last 20 kHz set.
ZONE BUS FAULTS	The numbers (1 - 8) of any buses on which a fault occurred in the zone bus test (more than 1 dB causes a fault indication, OKAY if within limits)
ZONE BUS SET	The set level for the zone bus test ¹ . The zone bus set originates from a selected microphone station oscillator output, goes through the ACS bus to the selected circuit, through the 596, and to the 590A input.

Explanation of 596 Printout



Key sequence: When the function key is pressed, if a printer is connected and is On Line, the printout begins and continues until complete. The data for all 596s will print in sequence.

Error messages: None.

ENTER ATRIB (ENTER TEST ATTRIBUTES)

Description: The **ENTER ATRIB** function is used to enter the desired test attributes (Monitor, Audible Test Frequency, 20 kHz Test, Zone Bus Test, External) for each 596 input. Attribute combinations are selected from a pop-up window and transferred to the 596 inputs. Attributes may only be assigned to inputs which have first been named.

Key sequence: When the function key is pressed, the following prompt appears:

Pg Up, Pg Dn, ↑, ↓, →, ←, keys move cursor. Ins key to ENTER Attributes.
Del key to change TEMPLATE.

The Pg Dn and Pg Up keys move the display ahead and back one screen (32 inputs), respectively. The down arrow key moves the cursor ahead one input at a time. When the last input on the screen is reached, the next screen (32 inputs) is displayed, with the cursor at the first input of the new screen. The up arrow key moves the cursor in a similar manner, in the reverse direction. The left and right arrow keys move the cursor between columns.

The current template (combination of attributes) is displayed at the upper right of the screen. If it is not the desired combination, press the Del key. A window will pop up in the center of the screen displaying ten attribute combinations. A total of fifty combinations are available, and are listed below.

M/EXT	M/4k/Z	M/500/20k/Z	20k/Z	4k
M/150	M/8k/Z	M/800/20k/Z	150/20k/Z	8k
M/500	M/20k	M/4k/20k/Z	500/20k/Z	Z
M/800	M/150/20k	M/8k/20k/Z	800/20k/Z	150/Z
M/4k	M/500/20k	20k	4k/20k/Z	500/Z
M/8k	M/800/20k	150/20k	8k/20k/Z	800/Z
M/Z	M/4k/20k	500/20k	EXT	4k/Z
M/150/Z	M/8k/20k	800/20k	150	8k/Z
M/500/Z	M/20k/Z	4k/20k	500	M
M/800/Z	M/150/20k/Z	8k/20k	800	(Blank)

Listing of Attribute Combinations

The meanings of the test attributes are explained in the table below.

*Innovative Electronic Designs, Inc. • 9701 Taylorsville Road • Louisville, Kentucky 40299 • USA
Phone: (502) 267-7436 • Fax: (502) 267-9070 • Internet: <http://www.iedaudio.com>*

ATTRIBUTE	EXPLANATION
M	Monitor (Listen to signal over monitor speaker)
150, 500, 800, 4k, 8k	Audible frequencies for manual or automatic once a day test Note: If testing 2- or 3-way speakers with passive crossovers, a separate input is required for each audible frequency used.
20k	Once a minute test using a 20 kHz test tone. Note: Tested circuit must be capable of passing a 20 kHz test tone.
Z	Zone Bus Test. Normally used for testing <u>every</u> ACS zone output to all 8 busses.
EXT	External. Used for testing DC power supplies. DC couples 590A input allowing DC to be tested.
Explanation of Attributes	

The cursor (white background) will be positioned at the first combination displayed. The up and down arrow keys move the cursor ahead and back, respectively, through the display, one combination at a time. The Pg Dn and Pg Up keys move the cursor ahead and back, respectively, ten combinations at a time. The Home key moves the cursor to the beginning of the list, and the End key moves the cursor to the end of the list. Position the cursor at the desired attribute combination, then press the ENTER key. The attribute combination will appear at the upper right of the screen. Now, position the cursor at the desired input and press the Ins key to apply the selected attribute combination to that input. After pressing the Ins key, the attributes will appear in the column next to the circuit name for that input, and the cursor will move to the next input. If that input is to receive the same attribute combination, press the Ins key again. If not, select the desired combination as described above. Repeat until attribute assignments are complete, then press ENTER to exit the function.

Error messages: If it is attempted to assign attributes to an input which has not yet been named, the message "Must be given a NAME!" appears in the prompt area.

ADD A 596

Description: The **ADD A 596** function is used allow the software to recognize a 596 which has been physically added to the system.

Key sequence: When the function key is pressed the prompt warns:

Warning! Once a 596 has been added it CANNOT be removed.

After a few seconds the following is added to the prompt:

Current # of 596's is X. Add a 596? Y/N:_



X represents the current number of 596s of which the software is aware. If it is desired to add a 596, type 'Y', then press ENTER. Otherwise the function is aborted. A new prompt appears requesting:

Enter the Y 596 ADDRESS (0 - 255) : ____

Y represents the number of the 596 which is being added. Type the desired address, then press ENTER. If a valid address is not added, the function is aborted. A new prompt requests:

Enter the Y 596's port number (0 - 15) 0=2C1, : ____

Y again represents the number of the 596 which is being added. Type the desired port number, then press ENTER. If a valid port number is not entered, the function is aborted. If all entries are made properly, a new 596 is added.

Error messages: If an invalid address or port number is entered, the message "Entry selected is not available!" appears, and the function is aborted.

MIC TEST IN (MICROPHONE STATION TEST INPUT)

Description: The **MIC TEST IN** function is used to designate the 596 input through which microphone station test signals are fed. The currently selected input is displayed at the upper left of the screen.

Key sequence: When the function key is pressed, the prompt states:

Pg Up, Pg Dn, ↑, ↓, →, ←, keys move cursor. Ins key to Enter MIC TEST

32 inputs are displayed at a time. The Pg Dn key moves the display ahead to the next 32 inputs. The Pg Up moves the display back 32 inputs. When the cursor is at the desired input, press the Ins key. It will be displayed immediately at the upper left of the screen. Press ENTER to end the function.

Error messages: None.

EXIT

Description: The **EXIT** function is used to leave the current menu and return to the previous menu.

Key sequence: When the function key is pressed, the computer returns to the previous menu, and the screen reverts to the corresponding screen as appropriate.

Error messages: None.

*Innovative Electronic Designs, Inc. • 9701 Taylorsville Road • Louisville, Kentucky 40299 • USA
Phone: (502) 267-7436 • Fax: (502) 267-9070 • Internet: <http://www.iedaudio.com>*

SELCT LEVEL (SELECT LEVEL)

Description: The **SELCT LEVEL** function is used to select the signal level at which the audible frequency tests and the 20 kHz tests are run.

Key sequence: When the function key is pressed, the prompt states:

Level for: 1) AUDIBLE TESTS 2) 20K TEST_

Type 1 or 2 to select the type of test for which the level is to be set, then press ENTER. A second line is added to the prompt which requests:

Enter TONE LEVEL desired in dB [-30dB to +24dB]:__

Type the desired level, then press ENTER. The '-' sign must be entered for negative values. It '+' is optional. The new value is displayed immediately in the appropriate position at the right side of the screen.

Error messages: If an entry other than those indicated in the prompts is entered, the message "Entry selected is not available!" is displayed.

SYSTEM SET

Description: The **SYSTEM SET** function causes the system to step through all circuits using a signal of the frequency and level previously entered, and measure the level at the input to the 590A for each test point. When this operation is complete, it allows the listening level for monitoring to be set. The audio level should be set to the lowest usable level measured during system set. Any circuit level equal to or greater than the level chosen will be heard at the same level through the monitor speaker. Lower levels will be heard at listening levels which are lower by the amount by which their measured levels are lower.

» **WARNING !! SYSTEM SET turns on audible tones which are fed to the entire sound system.**

Key sequence: When the function key is pressed, the **SYSTEM SET** procedure begins immediately. It is performed in groups, by frequency. The frequency, circuit identifiers, and the levels measured at the input to the 590A are displayed on the screen. The set process may be interrupted by pressing any key. It may be made to pause by holding down the Ctrl key and tapping the Num Lock key. It will then resume when any key is pressed. When all the circuits have been set at all selected frequencies, if the printer switch is ON and on line, a printout of the set data occurs automatically. A prompt then appears which states:

[AUDIO=-XX] SELECT THE AUDIO LISTENING LEVEL (-60dB TO 0dB): __

XX represents the current level. Once the desired value has been typed in and ENTER pressed, it immediately becomes the current value, and control is returned to the menu.



Error messages: When entering the desired audio level, if the “-” sign is omitted, a number outside the range of -60dB to 0dB is entered, or other characters are entered, the message “Entry selected is not available!” will appear, and control returns to the menu. If a **SYSTEM SET** is attempted when a link fault exists, the computer will beep and the following message will appear in the prompt area:

```
WARNING! There is a 596 link fault
```

The computer will beep again, and the following message will replace the previous message:

```
A VALID set CANNOT be performed with a 596 link fault
```

A set will be performed, but at its completion a message will appear which states:

```
This SYSTEM SET is NOT VALID!
```

PRINTER SW (PRINTER SWITCH)

Description: The **PRINTER SW** function is used to enable or disable the output to the printer. If a printer is connected to the printer port, and this function is ON (enabled), printouts will occur when requested or automatically, as indicated.

Key sequence: When the function key is pressed, the prompt indicates:

```
Printer is XX. Do you want the printer : 1) ON, 2)OFF
```

XX is the present state, ON or OFF. When the desired entry is typed in and ENTER is pressed, the action takes place and the computer returns to the menu.

Error messages: If a valid character other than 1 or 2 is entered, the computer will beep and display the message “Entry selected is not available!”, and will return control to the menu. The current status will be retained. Invalid characters will be rejected and will cause the computer to beep.

CIRCUIT DEV (CIRCUIT DEVIATION)

Description: The **CIRCUIT DEV** function is used to set the amount by which the level measured during a system test may deviate from the level measured during the system set without being considered a fault.

Key sequence: When the function key is pressed, the prompt requests:

```
Enter DEVIATION for: 1) Audible test. 2) 20K test.
```

When the selection has been typed and ENTER pressed, the prompt requests:

```
Enter DEVIATION in dB [1 to 10dB]:__
```

*Innovative Electronic Designs, Inc. • 9701 Taylorsville Road • Louisville, Kentucky 40299 • USA
Phone: (502) 267-7436 • Fax: (502) 267-9070 • Internet: <http://www.iedaudio.com>*

Type in a whole number between 1 and 10, and press the ENTER key. The new deviation value will appear on the screen.

Error messages: If an invalid character is typed, the computer will beep and it will not be accepted. If an entry other than 1-10 is made, when ENTER is pressed the computer will beep and the message "Entry selected is not available!" will appear in the prompt area.

SET AUDIO

Description: The **SET AUDIO** function is used to set the maximum level of the monitor signal (output of the 590A which goes to the input of the amplifier which drives the monitor speaker). It is the same function which comes up automatically as part of the **SYSTEM SET** function. The level should be set to the lowest usable level measured during system set. Any circuit level equal to or greater than the level chosen will be heard at the same level through the monitor speaker. Lower levels will be heard at listening levels which are lower by the amount by which their measured levels are lower. **SET AUDIO** is provided to allow the listening level to be reset without running another system set.

Key sequence: When the function key is pressed, the prompt displays the current level and requests that the desired listening level as follows:

[AUDIO=-XX] SELECT THE AUDIO LISTENING LEVEL (-60 TO 0dB): __

XX represents the current level. Any entry, including 0, must be preceded by a "-" sign to be accepted. Once the value has been typed in and ENTER pressed, it immediately becomes the current value, and control is returned to the menu.

Error messages: If the "-" sign is omitted, a number outside the range of -60dB to 0dB is entered, or other characters are entered, the message "Entry selected is not available!" will appear, and control returns to the menu. Invalid characters will cause the computer to beep and will be rejected.

CIRCUIT SET

Description: The **CIRCUIT SET** function measures the output of the selected circuit, using the parameters previously entered, and displays the result. If the value is saved, it will be used in subsequent system tests. For circuits which have been designated as monitor only, **CIRCUIT SET** must be used to adjust and save the listening level on an individual basis.



WARNING! The CIRCUIT SET will be carried out even if a link fault exists, but there will be no warning message (see SYSTEM SET Error messages). The set will be improper, and the circuit will fault in the next SYSTEM TEST or CIRCUIT TEST. The circuit will have to be reset after the link fault is cleared.

Key sequence: When the function key is pressed, a pop-up display of circuits appears. Sixteen circuits are displayed at a time. The cursor (white background) will be at the first circuit in the display. The up and down arrow keys move the cursor through the display,



one circuit at a time. The Pg Dn and Pg Up keys move the display ahead and back, respectively, sixteen circuits at a time. The Home key moves the cursor to the first circuit, and the End key moves it to the last circuit. After a brief pause, the following appears in the prompt area:

```
[CIRCUIT NAME] = XX dB
↑↓ Volume Control                               F10: TO CONTINUE
```

XX represents the measured level at the input to the 590A from the circuit selected. When F10 is pressed, the message "SETTING 20K" will appear, if the circuit has been designated for the 20kHz test. If not, this step will be skipped. The function is then complete.

NOTE: The 20 kHz test is optional and is not supplied with every system.

To adjust the listening level of a monitor only circuit, after the circuit identifier has been entered and while the measured value is being displayed on the screen, select the desired level using the up and down arrows (the display will not be affected), then save the level as described above. The new level will remain in effect whenever the circuit is monitored, or until it is readjusted.

Error messages: If the selected circuit has not been assigned a test attribute, the following message appears:

```
[Circuit Name] does not have a TEST attribute
```

TEST ZONES

Description: The **TEST ZONES** function is provided to permit assigning zone maps for the Audible Frequency and Microphone Station tests. The zone maps determine the zones to which the tones for each of these tests are directed. In the case of the Audible Frequency test, only those zones which are mapped are tested. In the case of the Microphone Station test, it is only necessary to map one zone, but any number may be mapped, if desired.

» **Note: During each type of test, tones feed all zones selected.**

Key sequence: When the function key is pressed, the prompt states:

```
SETUP THE 1) AUDIBLE TEST ZONES 2) MIC TEST ZONES:
```

Type 1 or 2, then press ENTER. The selected zone map will appear, along with a prompt which states:

```
Use arrow Keys to select zone, Ins to turn zone ON or OFF.
Del key to change area. Press ENTER when finished.
```

The left and right arrow keys move the cursor sequentially through the entire zone map. The up and down arrow keys move in between rows. The cursor position is indicated by a blue highlight around the zone number at which it is located. Pressing the Ins key will

*Innovative Electronic Designs, Inc. • 9701 Taylorsville Road • Louisville, Kentucky 40299 • USA
Phone: (502) 267-7436 • Fax: (502) 267-9070 • Internet: <http://www.iedaudio.com>*

switch the zone OFF if it is ON, or ON if it is OFF. When a zone is ON, its indicator is green. When it is OFF, its indicator is black. When a zone is toggled (switched), the cursor will advance to the next zone, making it simple to switch a number of zones in sequence. After the desired zone map has been set up, press the ENTER key. The computer asks:

Do you wish to save the current assignments [Y/N] ? _

Type Y to save, or N to exit without saving, then press ENTER. Pressing ENTER with no entry will also exit without saving.

Error messages: Any entry except 1 or 2 in response to the first prompt will be rejected and will cause the computer to beep. Any character except a Y or N in response to the request to save will cause the message "ERROR! Enter Y or N" to appear for a few seconds. The computer will then continue to wait until a Y, N, or no character is entered.





The Menu Tree is a diagram which includes all menus, and shows their interconnection. By examining the Menu Tree one may determine the path which must be followed to arrive at the desired function. The functions section includes a detailed description of each function, and how it operates.

Figure 1 - Menu Tree

*Innovative Electronic Designs, Inc. • 9701 Taylorsville Road • Louisville, Kentucky 40299 • USA
Phone: (502) 267-7436 • Fax: (502) 267-9070 • Internet: <http://www.iedaudio.com>*

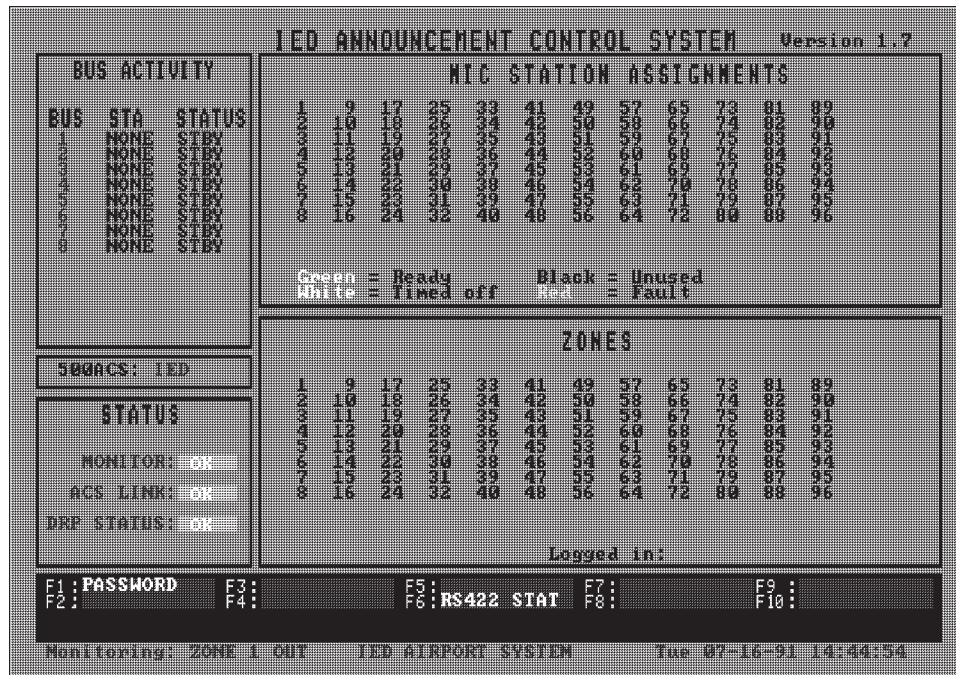


Figure 2 - Password Menu and Screen

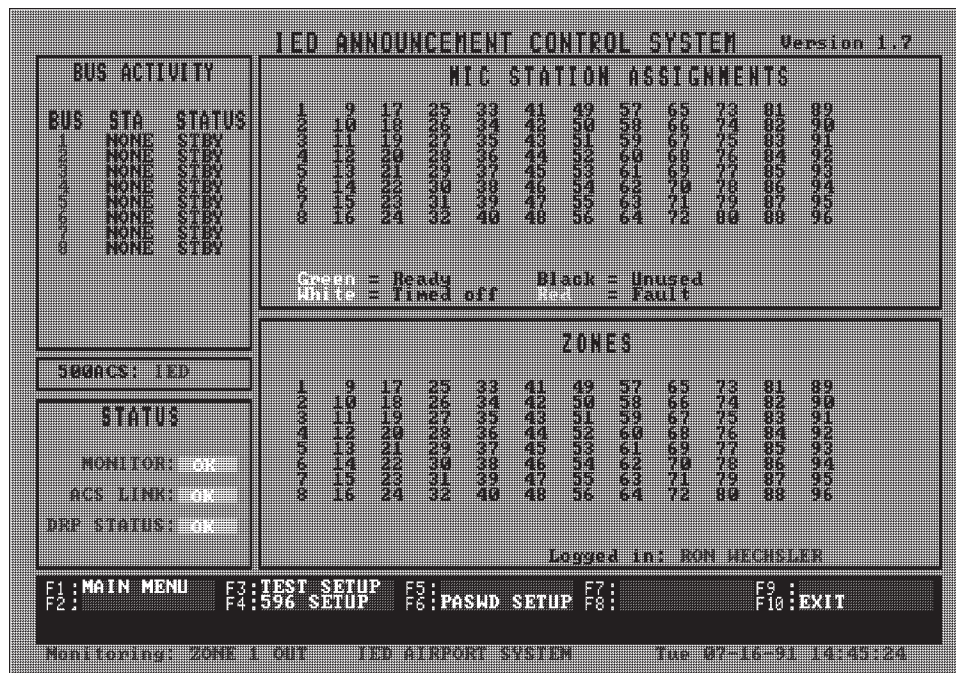


Figure 3 - Setup Menu and Screen



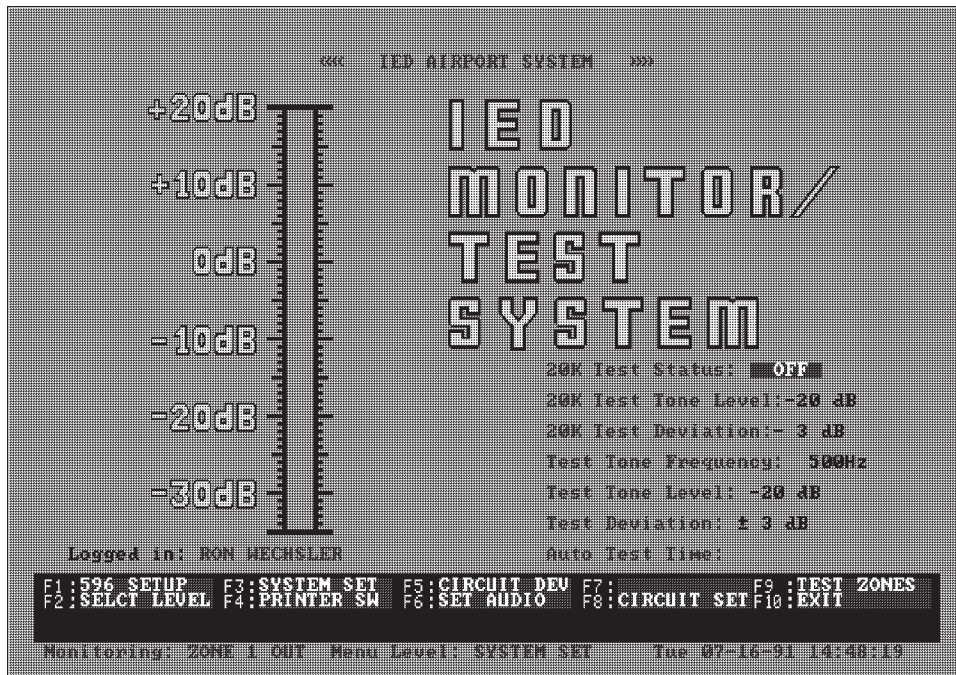


Figure 4 - System Set Menu and Screen

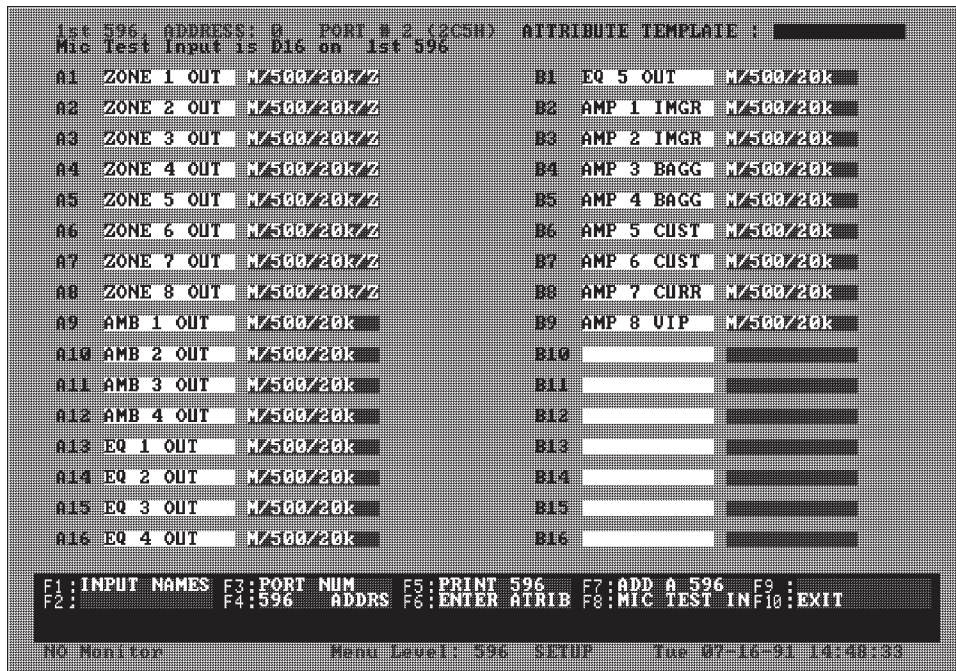


Figure 5 - 596 Setup Menu and Screen

*Innovative Electronic Designs, Inc. • 9701 Taylorsville Road • Louisville, Kentucky 40299 • USA
Phone: (502) 267-7436 • Fax: (502) 267-9070 • Internet: <http://www.iedaudio.com>*

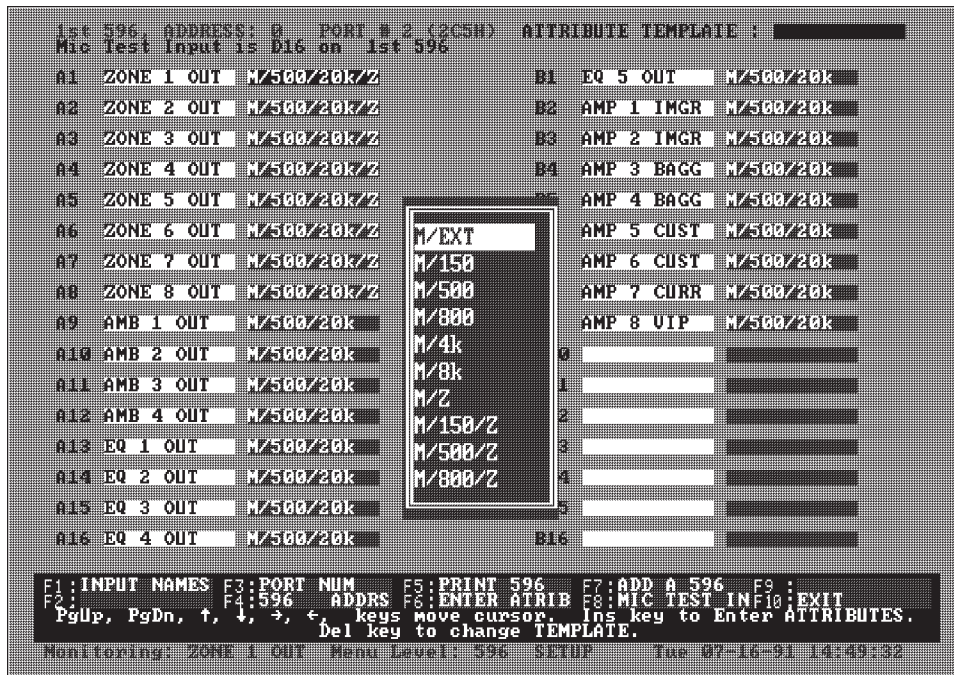


Figure 6 - 596 Setup Menu and Screen
Showing Enter Attribute Prompt and Pop-up Selection Window



Figure 7 - System Set in Progress Screen



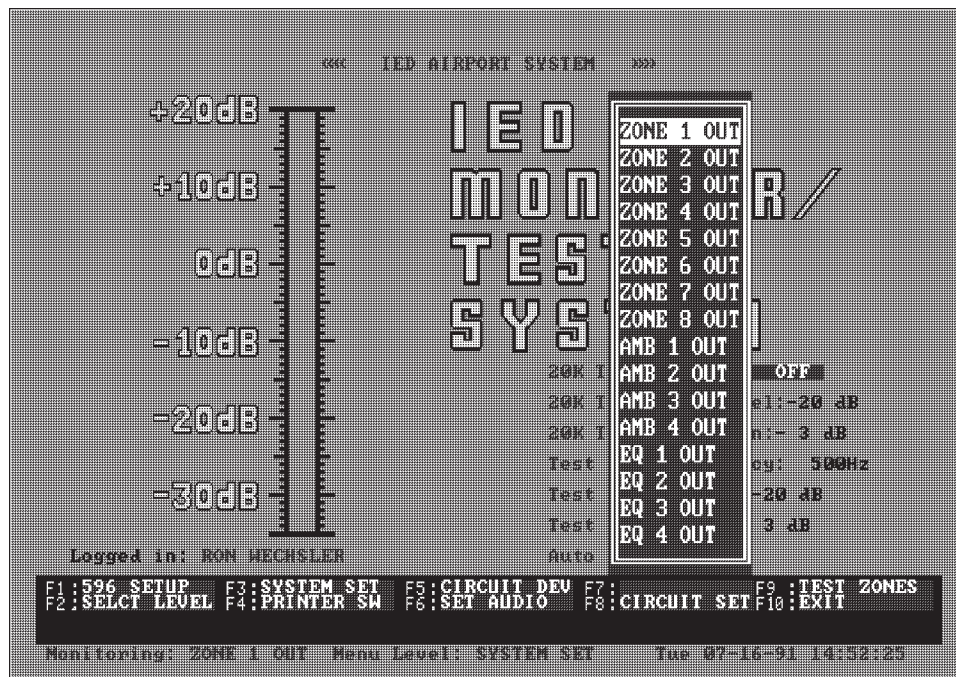


Figure 8 - System Set Menu and Screen Showing Circuit Set Pop-up Selection Window

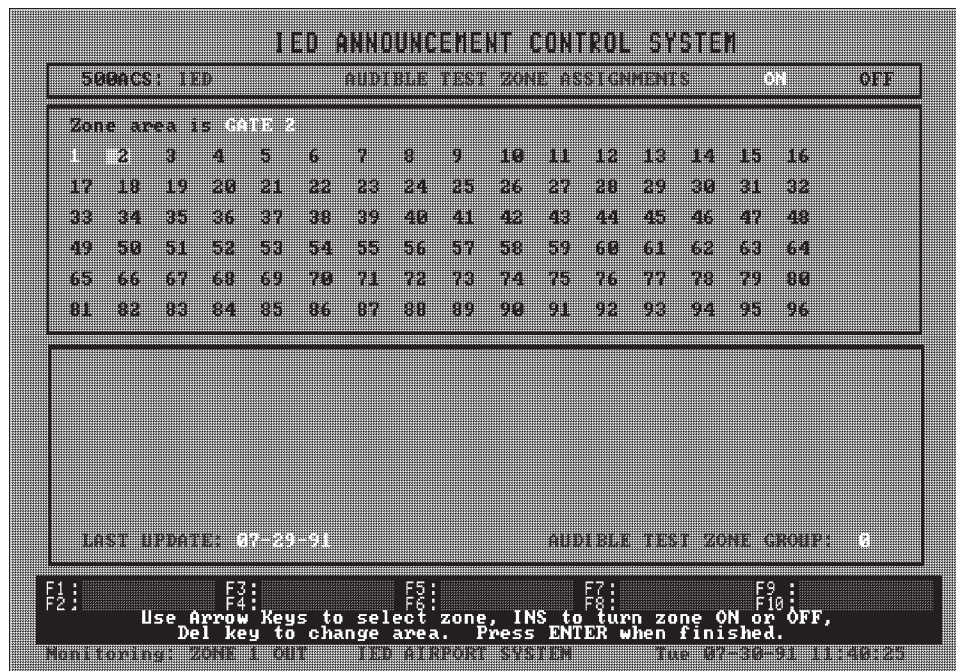


Figure 9 - Audible Test Zone Assignment Screen and Prompt

*Innovative Electronic Designs, Inc. • 9701 Taylorsville Road • Louisville, Kentucky 40299 • USA
Phone: (502) 267-7436 • Fax: (502) 267-9070 • Internet: <http://www.iedaudio.com>*

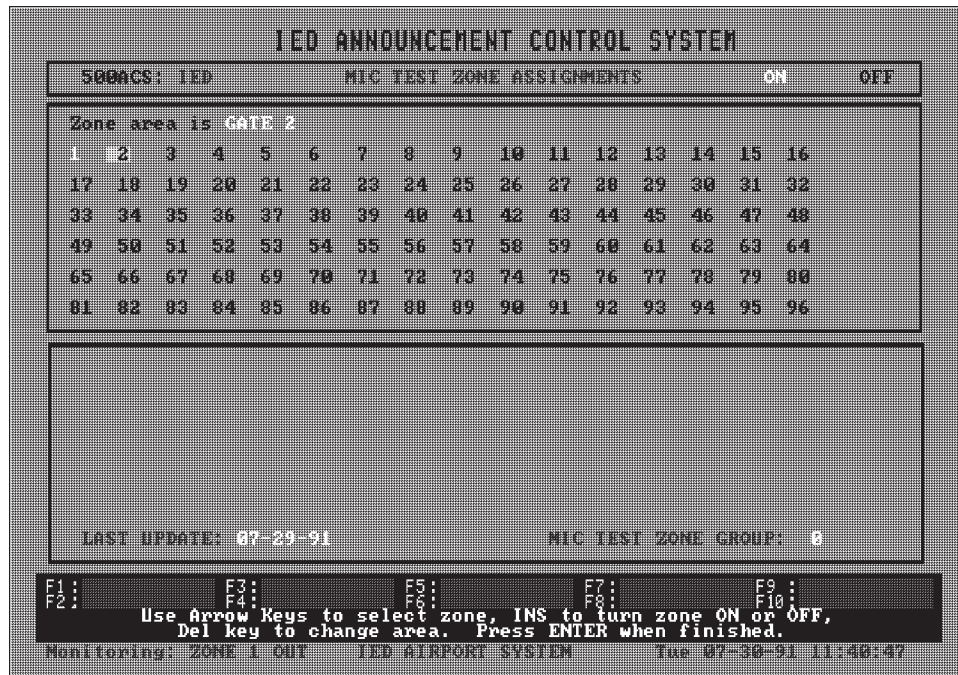


Figure 10 - Microphone Station Test Zone Assignment Screen and Prompt



Monitor Information for 1st 596.

ADDRESS 0 PORT # 1 (2C3H)

07-18-91, 17:03:20
IED AIRPORT SYSTEM
SYSTEM SET

IN	NAME	ATTRIBUTE	SET LEVEL	DEVIA- TION	20K SET	20K DEV.	ZONE BUS FAULTS	ZBUS SET
A1	ZONE 1	OUT M/500/20k/Z	-20dB	+0dB	-22dB	+0dB	N/A	
A2	ZONE 2	OUT M/500/20k/Z	-20dB	+0dB	-22dB	+0dB	N/A	
A3	ZONE 3	OUT M/500/20k/Z	-21dB	+0dB	-22dB	+0dB	N/A	
A4	ZONE 4	OUT M/500/20k/Z	-20dB	+0dB	-22dB	+0dB	N/A	
A5	ZONE 5	OUT M/500/20k/Z	-20dB	+0dB	-22dB	+0dB	N/A	
A6	ZONE 6	OUT M/500/20k/Z	-21dB	+0dB	-22dB	+0dB	N/A	
A7	ZONE 7	OUT M/500/20k/Z	-21dB	+0dB	-22dB	+0dB	N/A	
A8	ZONE 8	OUT M/500/20k/Z	-20dB	+0dB	-22dB	+0dB	N/A	
A9	AMB 1	OUT M/500/20k	-20dB	+0dB	-22dB	+0dB	N/A	
A10	AMB 2	OUT M/500/20k	-21dB	+0dB	-22dB	+0dB	N/A	
A11	AMB 3	OUT M/500/20k	-20dB	+0dB	-22dB	+0dB	N/A	
A12	AMB 4	OUT M/500/20k	-20dB	+0dB	-22dB	+0dB	N/A	
A13	EQ 1	OUT M/500/20k	-21dB	+0dB	-22dB	+0dB	N/A	
A14	EQ 2	OUT M/500/20k	-20dB	+0dB	-22dB	+0dB	N/A	
A15	EQ 3	OUT M/500/20k	-20dB	+0dB	-22dB	+0dB	N/A	
A16	EQ 4	OUT M/500/20k	-21dB	+0dB	-22dB	+0dB	N/A	
B1	EQ 5	OUT M/500/20k	-20dB	+0dB	-22dB	+0dB	N/A	
B2	AMP 1	IMGR M/500/20k	-20dB	+0dB	-22dB	+0dB	N/A	
B3	AMP 2	IMGR M/500/20k	-20dB	+0dB	-22dB	+0dB	N/A	
B4	AMP 3	BAGG M/500/20k	-20dB	+0dB	-22dB	+0dB	N/A	
B5	AMP 4	BAGG M/500/20k	-20dB	+0dB	-22dB	+0dB	N/A	
B6	AMP 5	CUST M/500/20k	-20dB	+0dB	-22dB	+0dB	N/A	
B7	AMP 6	CUST M/500/20k	-20dB	+0dB	-22dB	+0dB	N/A	
B8	AMP 7	CURR M/500/20k	-20dB	+0dB	-22dB	+0dB	N/A	
B9	AMP 8	VIP M/500/20k	-20dB	+0dB	-22dB	+0dB	N/A	
B10	AMP 9	M	N/A	N/A	N/A	N/A	N/A	
B11			N/A	N/A	N/A	N/A	N/A	
B12			N/A	N/A	N/A	N/A	N/A	
B13			N/A	N/A	N/A	N/A	N/A	
B14			N/A	N/A	N/A	N/A	N/A	
B15			N/A	N/A	N/A	N/A	N/A	
B16			N/A	N/A	N/A	N/A	N/A	

Figure 11 - System Set Printout

*Innovative Electronic Designs, Inc. • 9701 Taylorsville Road • Louisville, Kentucky 40299 • USA
Phone: (502) 267-7436 • Fax: (502) 267-9070 • Internet: <http://www.iedaudio.com>*

Monitor Information for 1st 596.

ADDRESS 0 PORT # 1 (2C3H)

07-18-91, 17:05:15
IED AIRPORT SYSTEM

IN	NAME	ATTRIBUTE	SET LEVEL	DEVIA- TION	20K SET	20K DEV.	ZONE BUS FAULTS	ZBUS SET
A1	ZONE 1	OUT M/500/20k/Z	-20dB	+0dB	-22dB	+0dB	N/A	
A2	ZONE 2	OUT M/500/20k/Z	-20dB	+0dB	-22dB	+0dB	N/A	
A3	ZONE 3	OUT M/500/20k/Z	-21dB	+0dB	-22dB	+0dB	N/A	
A4	ZONE 4	OUT M/500/20k/Z	-20dB	+0dB	-22dB	+0dB	N/A	
A5	ZONE 5	OUT M/500/20k/Z	-20dB	+0dB	-22dB	+0dB	N/A	
A6	ZONE 6	OUT M/500/20k/Z	-21dB	+0dB	-22dB	+0dB	N/A	
A7	ZONE 7	OUT M/500/20k/Z	-21dB	+0dB	-22dB	+0dB	N/A	
A8	ZONE 8	OUT M/500/20k/Z	-20dB	+0dB	-22dB	+0dB	N/A	
A9	AMB 1	OUT M/500/20k	-20dB	+0dB	-22dB	+0dB	N/A	
A10	AMB 2	OUT M/500/20k	-21dB	+0dB	-22dB	+0dB	N/A	
A11	AMB 3	OUT M/500/20k	-20dB	+0dB	-22dB	+0dB	N/A	
A12	AMB 4	OUT M/500/20k	-20dB	+0dB	-22dB	+0dB	N/A	
A13	EQ 1	OUT M/500/20k	-21dB	+0dB	-22dB	+0dB	N/A	
A14	EQ 2	OUT M/500/20k	-20dB	+0dB	-22dB	+0dB	N/A	
A15	EQ 3	OUT M/500/20k	-20dB	+0dB	-22dB	+0dB	N/A	
A16	EQ 4	OUT M/500/20k	-21dB	+0dB	-22dB	+0dB	N/A	
B1	EQ 5	OUT M/500/20k	-20dB	+0dB	-22dB	+0dB	N/A	
B2	AMP 1	IMGR M/500/20k	-20dB	+0dB	-22dB	+0dB	N/A	
B3	AMP 2	IMGR M/500/20k	-20dB	+0dB	-22dB	+0dB	N/A	
B4	AMP 3	BAGG M/500/20k	-20dB	+0dB	-22dB	+0dB	N/A	
B5	AMP 4	BAGG M/500/20k	-20dB	+0dB	-22dB	+0dB	N/A	
B6	AMP 5	CUST M/500/20k	-20dB	+0dB	-22dB	+0dB	N/A	
B7	AMP 6	CUST M/500/20k	-20dB	+0dB	-22dB	+0dB	N/A	
B8	AMP 7	CURR M/500/20k	-20dB	+0dB	-22dB	+0dB	N/A	
B9	AMP 8	VIP M/500/20k	-20dB	+0dB	-22dB	+0dB	N/A	
B10	AMP 9	M	N/A	N/A	N/A	N/A	N/A	
B11			N/A	N/A	N/A	N/A	N/A	
B12			N/A	N/A	N/A	N/A	N/A	
B13			N/A	N/A	N/A	N/A	N/A	
B14			N/A	N/A	N/A	N/A	N/A	
B15			N/A	N/A	N/A	N/A	N/A	
B16			N/A	N/A	N/A	N/A	N/A	

Figure 12 - Set 596 Printout



This page left blank intentionally

*Innovative Electronic Designs, Inc. • 9701 Taylorsville Road • Louisville, Kentucky 40299 • USA
Phone: (502) 267-7436 • Fax: (502) 267-9070 • Internet: <http://www.iedaudio.com>*